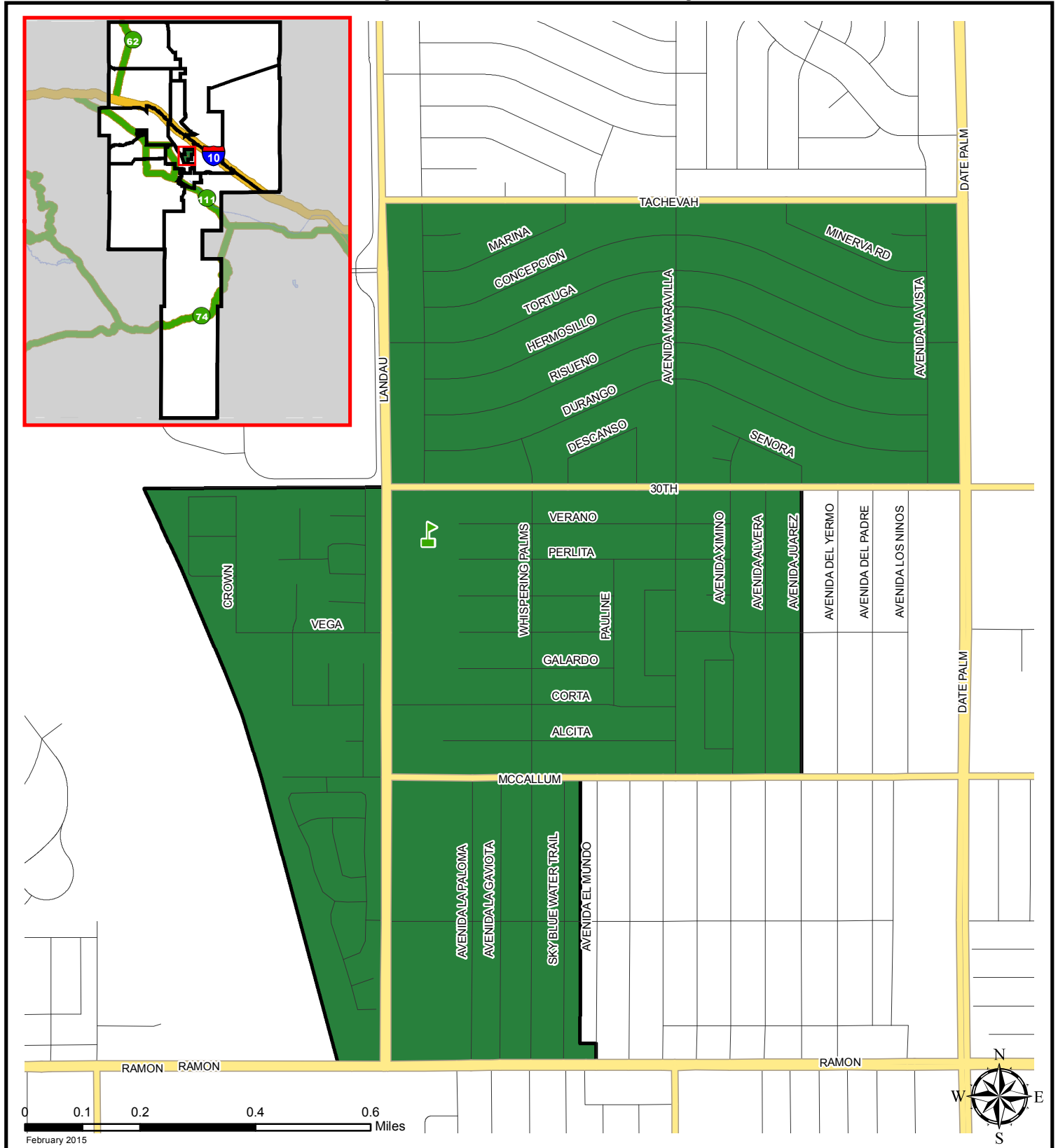


# Palm Springs Unified School District

## Current Attendance Boundary of Landau Elementary School



### Boundary Description:

The northern boundary for this area runs east along the centerline of Tachevah Drive from the intersection of Tacheva and Landau Boulevard to the intersection with intersection with Date Palm Drive. The eastern boundary runs south on Date Palm Drive from that point to the intersection with 30th Avenue and then travels west on 30th Avenue to the intersection with Avenida Juarez and then south along Avenida Juarez until the intersection with McCallum Way, then west on McCallum Way to the property line between Avenida el Mundo and Sky Blue Water Trail, then south along the property line between Avenida el Mundo and Sky Blue Water Trail to the property line for properties facing East Ramon Road, then east along this property line to the intersection with Avenida el Mundo, then south on Avenida el Mundo to the intersection with East Ramon Road. The southern boundary line runs west along East Ramon Road from its intersection with Avenida el Mundo until it reaches the eastern edge of the Whitewater River. The western boundary line runs north along the eastern edge of the Whitewater River until the intersection with 30th Avenue and then travels east on 30th Avenue to the intersection of Landau Boulevard and then north on Landau Boulevard to the intersection of Landau Boulevard and Tachevah Drive.